

# MOUNTING INSTRUCTIONS FOR THE BUTLER SYSTEM ON THE CANAM SPYDER

THIS DEVICE IS DESIGNED FOR MOUNTING ON THE RIGHT HANDLEBAR OF THE CANAM SPYDER RT OR RS.

NOTE: ON SOME SPYDER MODELS THE DEVICE CAN BE INSTALLED ON THE LEFT HANDLEBAR IF DESIRED.

ON THE RT, MOUNT THE DOUBLE SADDLE BRACKET RIGHT NEXT TO THE STARTER SWITCH HOUSING.

ON THE RS, MOUNT THE DOUBLE SADDLE BRACKET ON THE ROUND STURDY PART OF THE HANDLEBAR.

THE LONG BOLTS GO FROM THE BOTTOM UP, AND THE BRACKET MUST BE POSITIONED SO THAT THE BOLTS ARE VERTICAL.

THE DEVICE IS SHIPPED ALREADY ASSEMBLED. TO MOUNT IT, THE DEVICE MUST BE DIS-ASSEMBLED.

THESE PICTURES SHOW THE PROPER POSITION OF EACH PART.

THE FIRST STEP, AFTER DISASSEMBLY IS TO SECURELY FASTEN THE DOUBLE SADDLE CLAMP TO THE HANDLEBAR.

THE LONGER BOLT IS PLACED ON THE DRIVER SIDE OF THE HANDLEBAR.

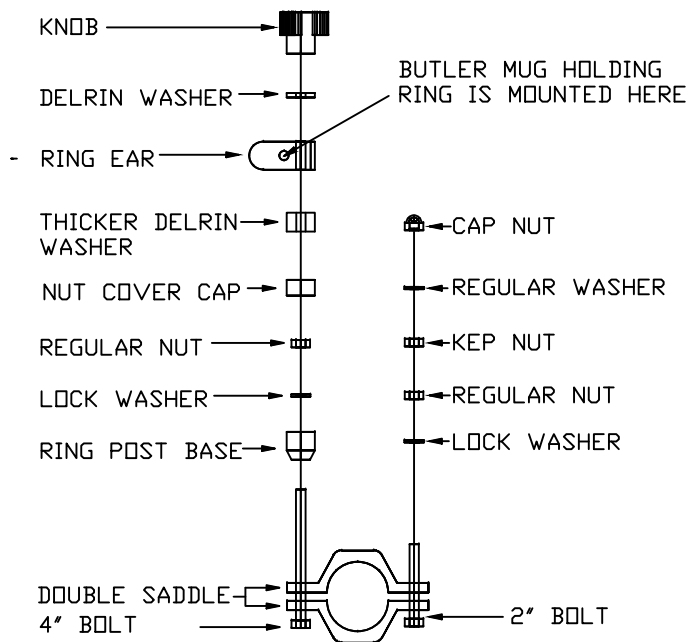
TIGHTEN BOTH BOLTS USING THE LOCK WASHERS AND REGULAR NUTS.

ONCE THE DOUBLE SADDLE CLAMP IS SECURELY FASTENED TO THE HANDLEBAR, APPLY THE REST OF THE PARTS AS SHOWN.

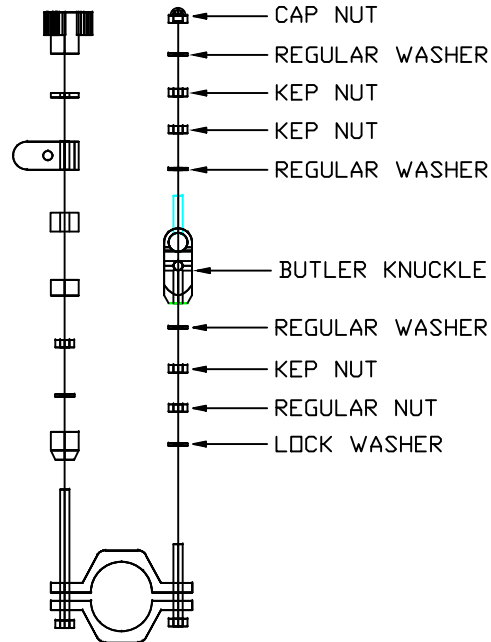
WHEN COMPLETE, THE BUTLER MUG HOLDING RING WILL BE AIMING TOWARD THE LEFT SIDE OF THE BIKE.

ALL PARTS MUST BE SECURELY FASTENED BEFORE USING THE SYSTEM.

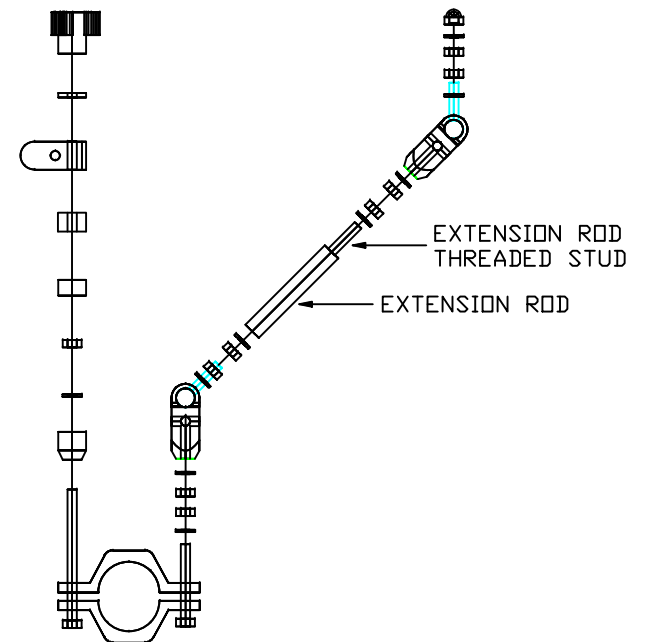
## TYPE A (RT OR RS)



## TYPE B (RT OR RS)



## TYPE C (RT OR RS)



NOTE: THE LONGER BOLT GOES ON THE RIDER SIDE OF THE HANDLEBAR

IF ADDITIONAL INFORMATION IS REQUIRED PLEASE CALL GLASSACT AT 888-892-4306

MUGS, LIDS, STRAWS AND STRAW CAPS CAN BE ORDERED ON THE WEBSITE [WWW.GLASSACT.COM](http://WWW.GLASSACT.COM), OR BY CALLING 888-892-4306