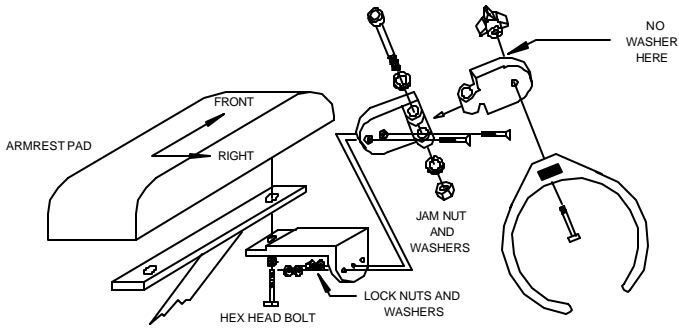


BUTLER PASSENGER MUG HOLDER MOUNTING INSTRUCTIONS

METHOD 1 : STANDARD BUTLER PASSENGER CONFIGURATION

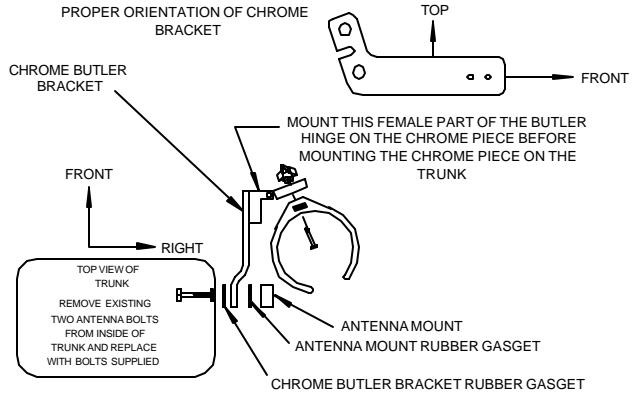
1500 GOLDWING - ALL TYPES OF ARMRESTS

1800 GOLDWING - BIG BIKE ARMRESTS, ADD ON ARMRESTS



METHOD 2 : BUTLER PASSENGER CONFIGURATION

1800 GOLDWING - NO ACCESSORY ARMRESTS



METHOD 3 : BUTLER PASSENGER CONFIGURATION

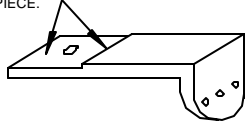
MARKLAND ARMREST - HONDA GL1800

STEP 1

REMOVE THE 4 SCREWS FROM THE BOTTOM OF THE RIGHT ARMREST PAD AND LIFT THE PAD AWAY FROM THE METAL SUPPORT PLATE.

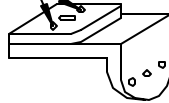
STEP 2

USING A HACKSAW, CUT THIS PIECE OFF OF THE BUTLER BRACKET ALONG THIS EDGE; SAVE THE CUTOFF PIECE.



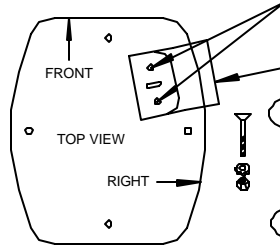
STEP 3

PLACE THIS CUTOFF PIECE ON TOP OF THE "L" BRACKET AND DRILL TWO 1/4" HOLES THROUGH BOTH PIECES AS INDICATED.



STEP 4

PLACE THE TWO PIECES UNDER THE ARMREST PAD METAL PLATE IN THIS POSITION AND DRILL TWO 3/8" HOLES THROUGH THE METAL PLATE.



NOTE: THIS EDGE SHOULD BE FLUSH WITH THE SIDE OF THE ARMREST PAD WHEN THE PAD IS REINSTALLED.

STEP 5

PLACE TWO 1/4" - 20 FLAT HEAD BOLTS THROUGH THE TOP OF THE METAL PLATE AND THROUGH THE TWO PIECES OF THE BUTLER BRACKET AND TIGHTEN WITH WASHERS AND LOCK NUTS.

STEP 6

REPLACE THE ARMREST PAD THEN MOUNT THE REST OF THE BUTLER BRACKETING JUST LIKE THE STANDARD BUTLER PASSENGER CONFIGURATION ABOVE.

METHOD 4 : BUTLER PASSENGER CONFIGURATION

KURYAKYN ARMREST HONDA - GL1800

STEP 1

REMOVE THE 4 SCREWS FROM THE BOTTOM OF THE RIGHT ARMREST PAD AND LIFT THE PAD AND METAL SUPPORT PLATE FROM ITS BRACKET.

STEP 2

REMOVE THE 4 SCREWS FROM THE BOTTOM OF THE LEFT ARMREST PAD AND LIFT THE PAD AND METAL SUPPORT PLATE FROM ITS BRACKET. REMOUNT THE RIGHT ARMREST PAD AND SUPPORT PLATE (WITH THE METAL RING) ON THE LEFT SIDE OF THE BIKE.

STEP 3

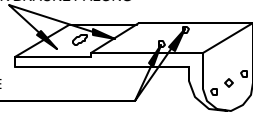
REMOVE THE RUBBER PAD FROM THE REMAINING SUPPORT PLATE.

STEP 4

USING A HACKSAW, CUT THIS PIECE OFF OF THE BUTLER BRACKET ALONG THIS LINE; DISCARD THE CUTOFF PIECE.

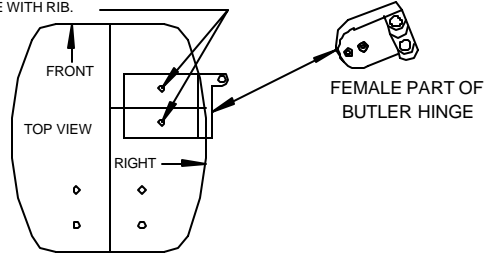
STEP 5

DRILL TWO 1/4" HOLES THROUGH THE "L" SHAPED PIECE AS INDICATED.



STEP 6

POSITION THE BUTLER "L" SHAPED PIECE AS INDICATED ON THE BOTTOM OF THE METAL PLATE AND DRILL TWO 1/4" HOLES THROUGH THE METAL PLATE ON EITHER SIDE OF RIB. MAKE SURE HEX HEAD BOLTS DO NOT INTERFERE WITH RIB.



FEMALE PART OF BUTLER HINGE

STEP 7

PLACE TWO HEX HEAD BOLTS THROUGH THE TOP OF THE METAL PLATE AND BOLT THE BUTLER "L" SHAPED PIECE TO THE BOTTOM OF THE PLATE USING LOCK NUTS AND WASHERS.

STEP 8

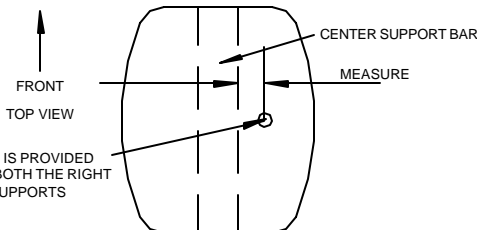
REPLACE THE RUBBER ARMREST PAD ON THE METAL PLATE AND REMOUNT ON THE BIKE. THEN MOUNT THE REST OF THE BUTLER BRACKETING JUST LIKE THE STANDARD BUTLER PASSENGER CONFIGURATION ABOVE.

METHOD 5 : BUTLER PASSENGER CONFIGURATION

AMERICAN MOTORCYCLE ACCESSORIES ARMREST

HONDA - GL1800

RIGHT ARMREST



STEP 1

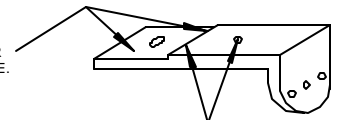
USING A HACKSAW, CUT THIS PIECE OFF OF THE BUTLER BRACKET ALONG THIS LINE; DISCARD THE CUTOFF PIECE.

STEP 2

MEASURE THE DISTANCE FROM THE CENTER SUPPORT BAR ON THE BOTTOM OF THE PAD SUPPORT TO THE CENTER OF THE THREADED HOLE THEN DRILL A 1/4" HOLE THROUGH THE BUTLER "L" SHAPED PIECE THIS DISTANCE FROM THE EDGE OF THE "L" SHAPED PIECE AS INDICATED.

STEP 3

BOLT THE BUTLER "L" SHAPED PIECE TO THE BOTTOM OF THE ARMREST PAD SUPPORT WITH BOLT AND WASHER SUPPLIED THEN INSTALL THE REST OF THE BUTLER JUST LIKE THE STANDARD BUTLER PASSENGER CONFIGURATION ABOVE.



FOR ADDITIONAL INFORMATION PLEASE CALL:

GLASS ACT - 888-892-4306